

A chromosomal investigation of three species of *Papilio* (Papilionidae : Lepidoptera)

MEENU SADHOTRA AND N.K. TRIPATHI

Department of Zoology, University of Jammu, JAMMU (J&K) INDIA

(Accepted : March, 2010)

Chromosome studies in three species of butterflies (*Papilio polytes*, *Papilio demoleus*, *Papilio glaucus*) revealed 60 as diploid chromosome number.

Key words : Chromosome, Diploid chromosome number

INTRODUCTION

Although intense investigations on chromosome cytology of Lepidoptera have been carried out in different parts of the world, work in India is almost negligible (Rishi, 1973; Nayak, 1975). The present communication deals with karyological study of somatic chromosomes from male and female and meiotic stages from male of three species of butterflies belonging to family Papilionidae.

MATERIALS AND METHODS

Larvae of three species of Sphingid moths were collected from their respective host plants and were reared in cages. The fifth instar larvae and early pupae were found suitable for chromosomal investigation. Brain ganglia from male and female and testes from male were dissected out and fixed in Carnoy's fixative. Slides were prepared following the technique of Rishi *et al.* (1997) and stained in Giemsa stain. Slides were examined under binocular research microscope, good stages were photographed.

RESULTS AND DISCUSSION

The results obtained from the present investigation are summarized below :

Papilio polytes :

The diploid number ($2n$) at somatic metaphase, both male and female consisted of 60 small, dot-like chromosomes (Fig. 1 and 2). In both size and morphology, the chromosomes were almost identical. The meiotic prophase in zygotene and pachytene showed elongated chromosomes, but their number was not countable at this stage. The pachytene bivalents showed lengthwise pairing of homologous chromosomes but exact position of

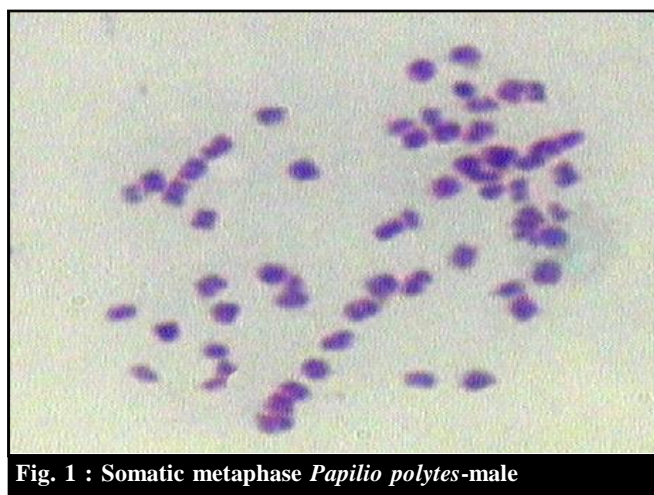


Fig. 1 : Somatic metaphase *Papilio polytes*-male

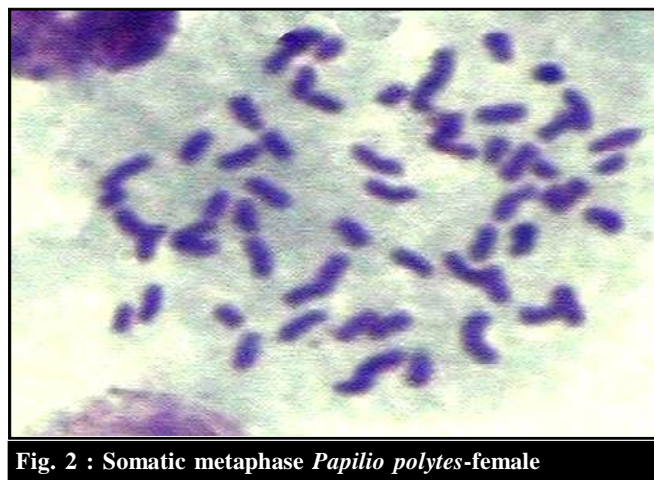


Fig. 2 : Somatic metaphase *Papilio polytes*-female

chiasmata was not clear. The chromosomes appeared more and more condensed as they passed through diplotene to metaphase I. The diakinetid bivalents showed chiasma bearing shapes like cross, rod, ring, thereby suggesting positive occurrence of chiasmata. The metaphase I

bivalents were at maximum state of condensation and were oval in shape and aligned at equator of the spindle with clearly visible spindle apparatus. Anaphasic movement was also seen (Fig.3, 4 and 5).



Fig. 3 : Pachytene



Fig. 4 : Diakinesis



Fig. 5 : Metaphase I

Papilio demoleus :

This species also showed the diploid number to be 60 from the somatic metaphases of both male and female larvae (Fig. 6 and 7). Good prophase stages were scored which confirmed the diploid number of the species (Fig. 8, 9 and 10).

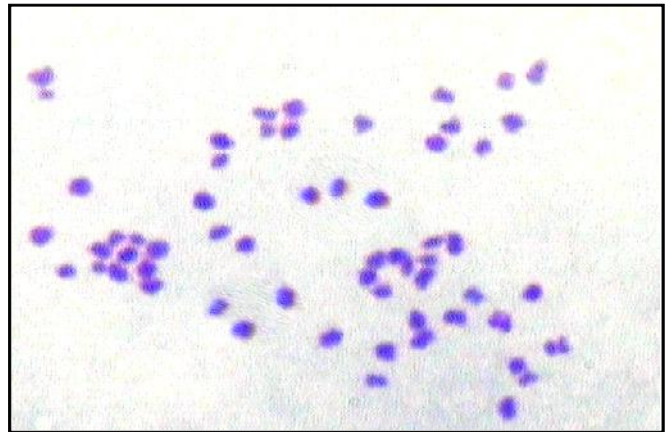


Fig. 6 : Somatic metaphase *Papilio demoleus*-male

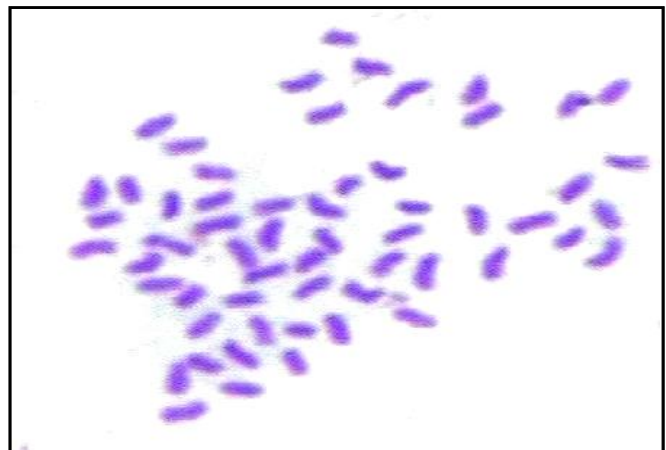


Fig. 7 : Somatic metaphase *Papilio demoleus*- female

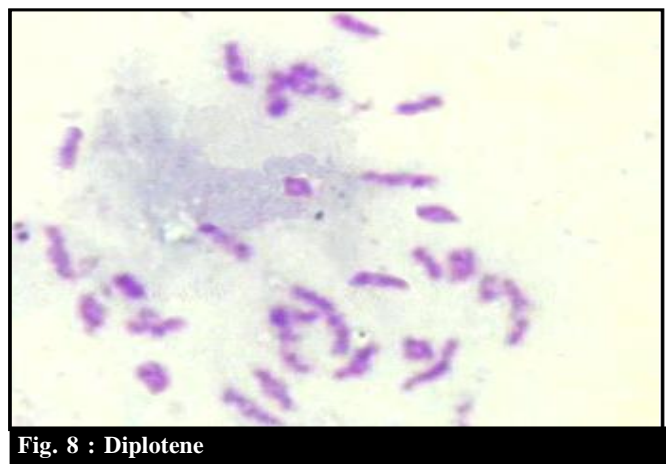


Fig. 8 : Diplotene

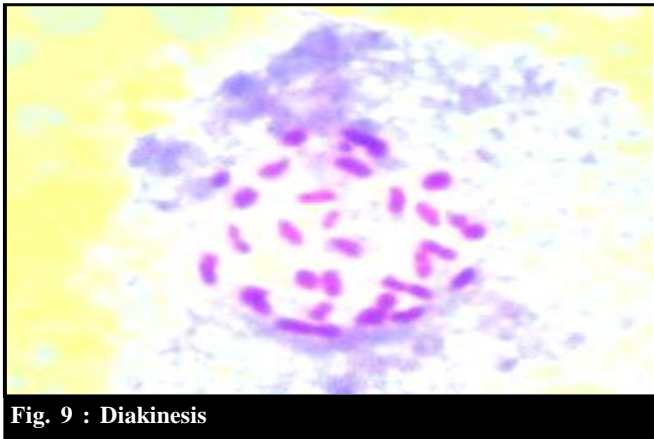


Fig. 9 : Diakinesis

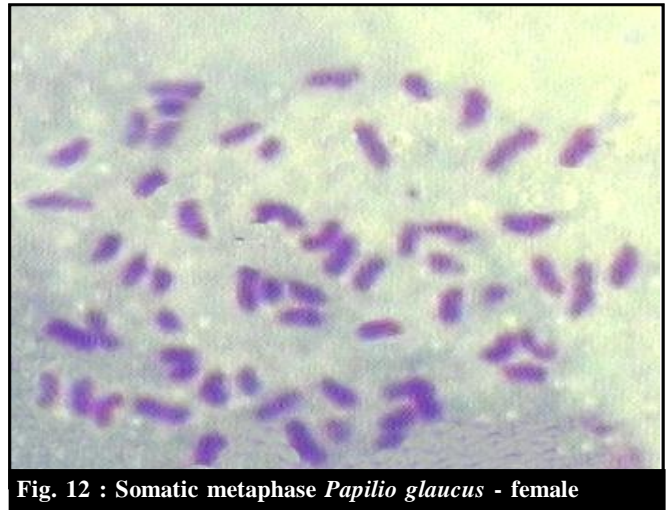
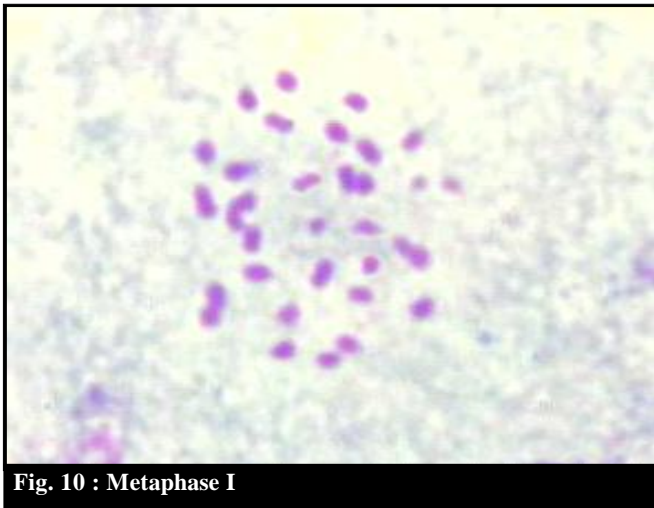
Fig. 12 : Somatic metaphase *Papilio glaucus* - female

Fig. 10 : Metaphase I



Fig. 13 : Pachytene

Papilio glaucus :

$2n=60$. Spermatogonial metaphase showed 60 number of chromosomes (Fig.11 and 12). Metaphase I showed 30 bivalents. Anaphase I was normal in good number of dividing cells (Fig.13, 14 and 15).

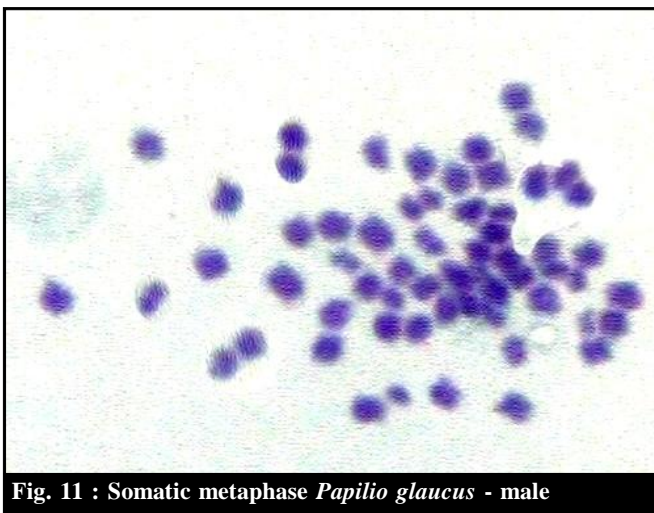
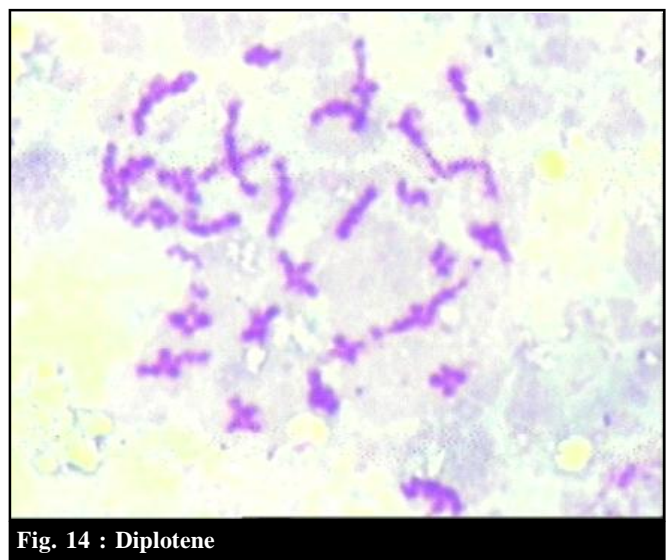
Fig. 11 : Somatic metaphase *Papilio glaucus* - male

Fig. 14 : Diplotene

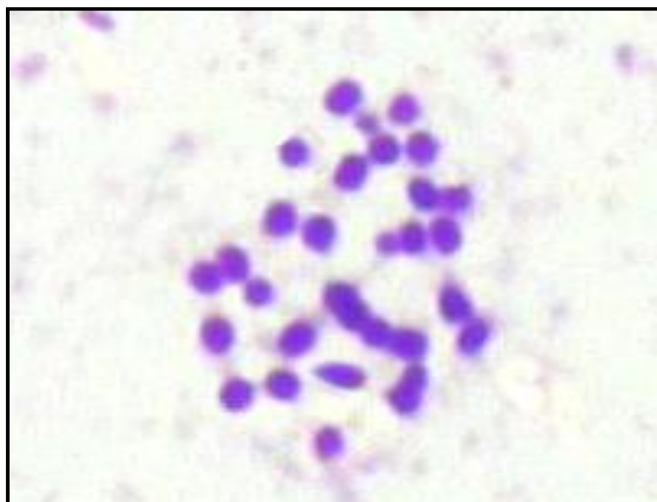


Fig. 15 : Metaphase I

It is an extensive family of pre-eminently tropical butterflies including some of the most magnificent of all insects. About 600 species are known but only eighty-four species of this family have been worked out cytologically. The modal chromosome number of this family appears to be 30 as 72 species possessed this number in their haploid set (Trentini and Marini, 1986; Rishi, 1975; Izumi and Seto, 1995). This family shows little variation in the chromosome number in the congeneric forms, in contrast to the condition prevalent in other families. Thus, the family Papilionidae, as a whole, is remarkable in showing almost constant haploid numbers in the various species. Any variations, which are there in some of the species, are quite insignificant. This family,

therefore, shows deviations in respect of the distribution of the chromosome numbers from the order Lepidoptera. The haploid chromosome number 30 deviates from 31 which is the modal number for the order Lepidoptera.

REFERENCES

- Izumi, H. and Seto, T. (1995).** Comparative karyology of two species of *Parnassius* : *P. glacialis* from Honshu and *P. stubbendorffii hoenei* endemic to Hokkaido, Japan (Lepidoptera : Papilionidae). *Kromosomo*, **2** (78) : 2683-2688.
- Nayak, B. (1975).** Studies on the male germinal chromosomes of thirty one species of moths and butterflies (Lepidoptera). *Prakruti-Utkal Univ. J. Sci.*, **12** (1&2): 141-150.
- Rishi, S. (1973).** Chromosome numbers of thirty species of Indian Lepidoptera. *Genen Phalnen*, **16**(3) : 119-122.
- Rishi, S. (1975).** Chromosome studies in Indian Lepidoptera. *Nucleus*, **18**(1&2) : 65-70.
- Rishi, S., Sahni, G. and Rishi, K.K. (1997).** Female heterogamety and localized centromeres in *Papilio demoleus* Lin. (Lepidoptera : Papilionidae). *Chromosome Sci.*, **1** : 109-113.
- Trentini, M. and Marini, M. (1986).** Chromosome numbers in four species of Papilionidae (Lepidoptera). *Giornale Italiano di Entomologia*, **3** : 205-208.

